

JN FERRAMENTARIA
DIE CASTING



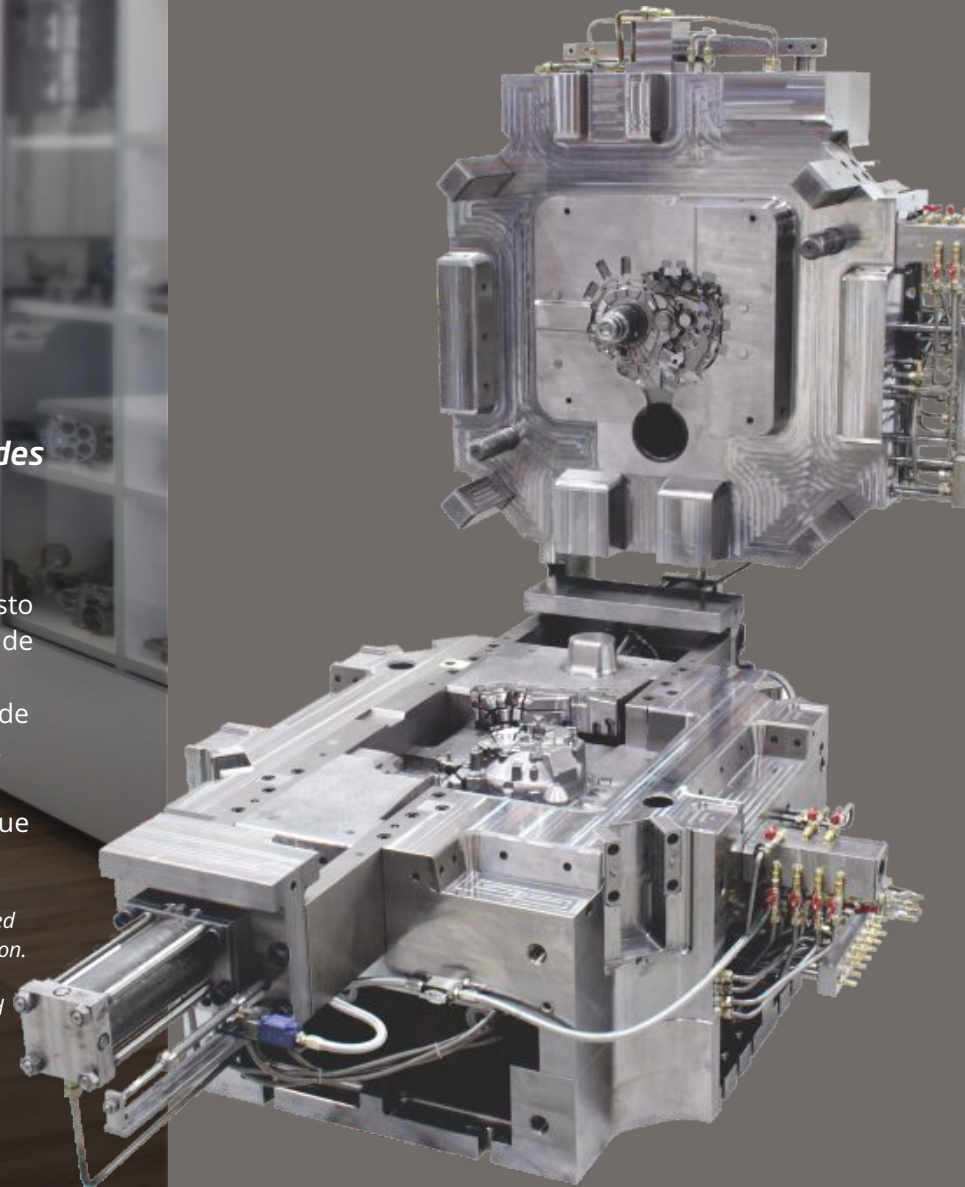
***Projeto e fabricação de Moldes
para injeção de alumínio***
Die casting design and manufacturing



***Projeto e fabricação de Moldes
para injeção de alumínio***
Die casting design and manufacturing

A JN Ferramentaria possui um vasto portfólio voltado para fabricação de moldes para injeção de alumínio. Nosso parque fabril é um centro de alta tecnologia, com profissionais altamente capacitados e maquinários de última geração que garantem resultados de ponta.

JN Ferramentaria has a vast portfolio focused on manufacturing dies for aluminum injection. Our manufacturing facility is a high-tech center, with highly trained professionals and state-of-the-art machinery that guarantee cutting-edge results.

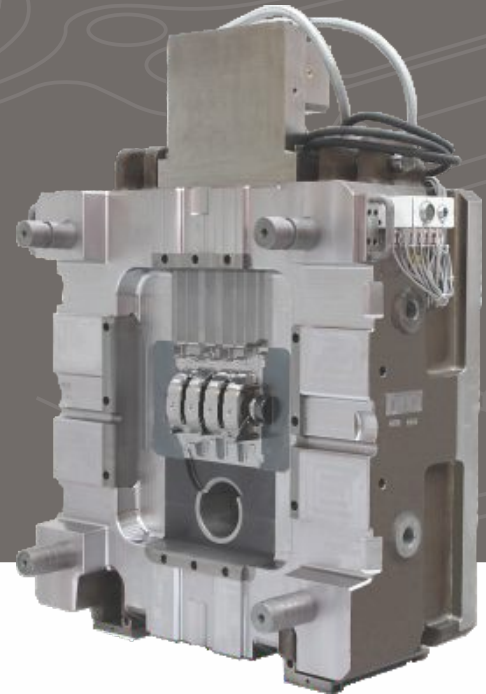
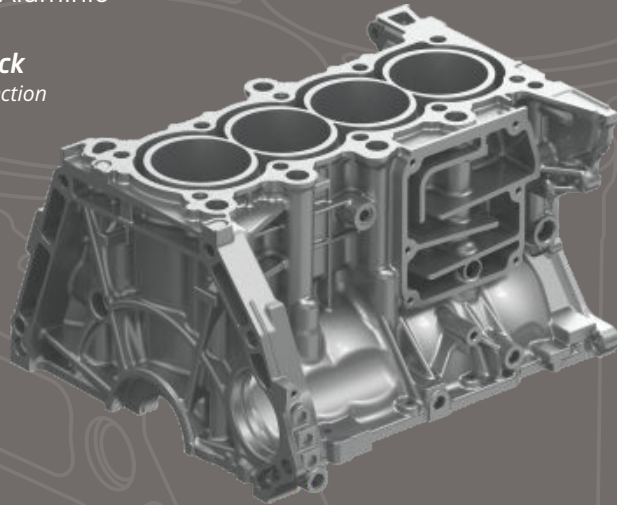


Bloco de Motor

Injeção de Alumínio

Engine Block

Aluminum injection



Molde Bloco de Motor

Dimensão: 3424 x 2584 x 1400mm

Peso: 22T

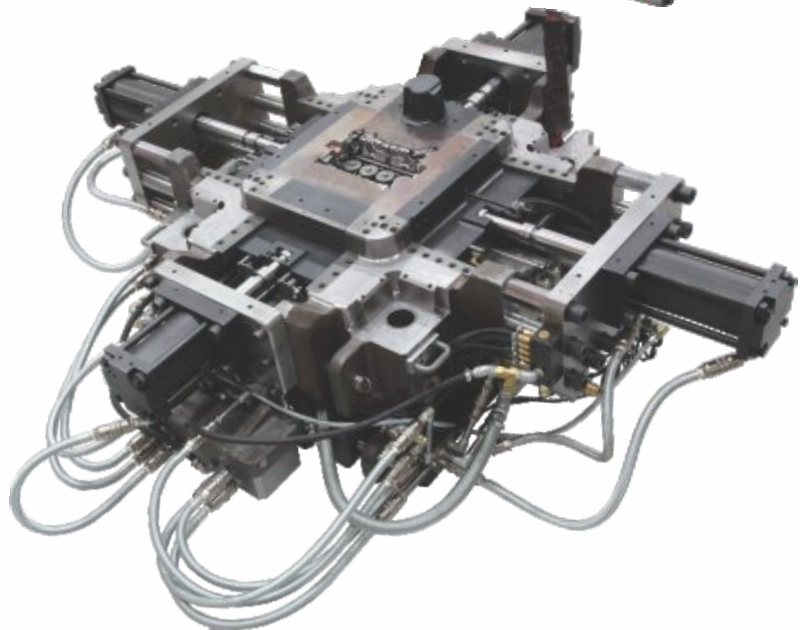
nº de Cavidades: 1

Mold Engine Block

Dimension: 3424 x 2584 x 1400mm

Weight: 22T

nº Cavities: 1

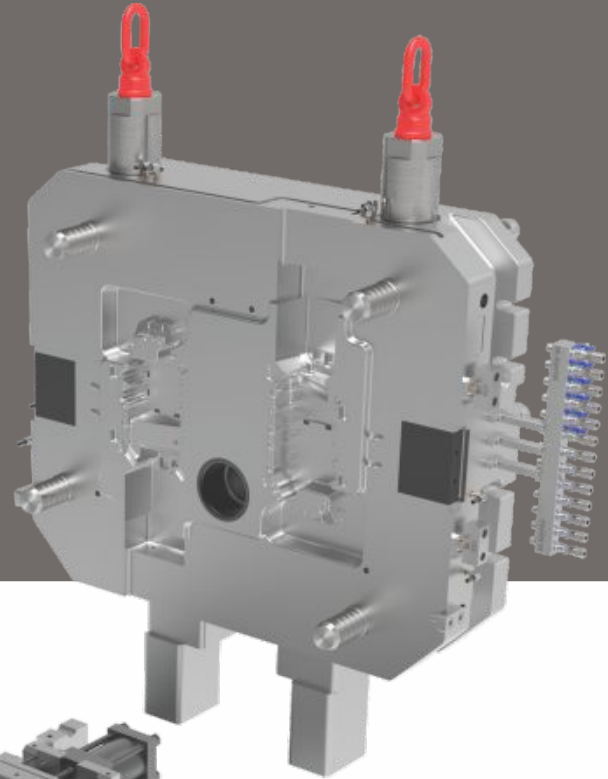
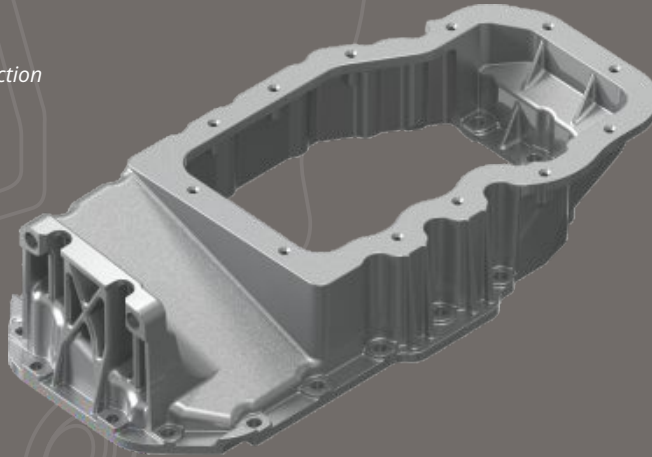


Carter Óleo

Injeção de Alumínio

Oil Pan

Aluminum injection



Molde Carter Óleo

Dimensão: 1200 x 1510 x 320mm

Peso: 12969kg

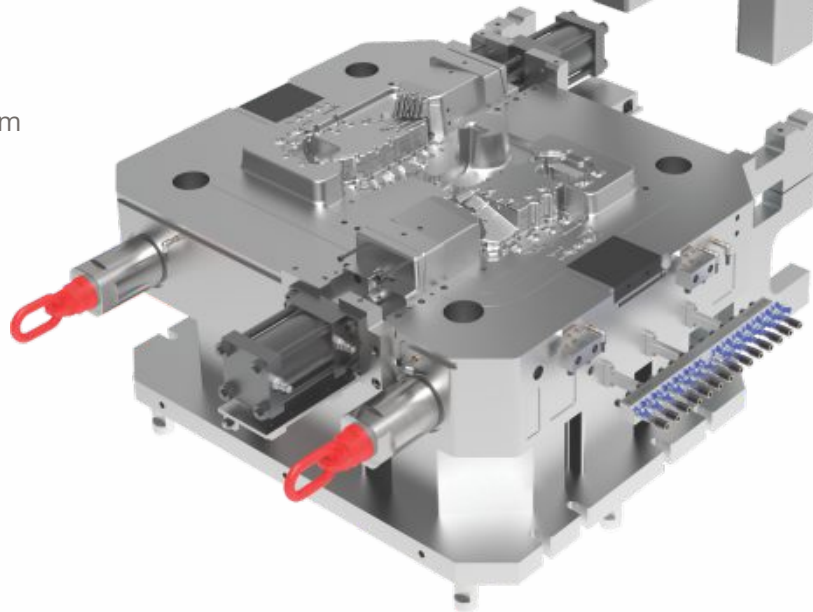
nº de Cavidades: 2

Mold Oil Pan

Dimension: 1200 x 1510 x 320mm

Weight: 12969kg

nº Cavities: 2

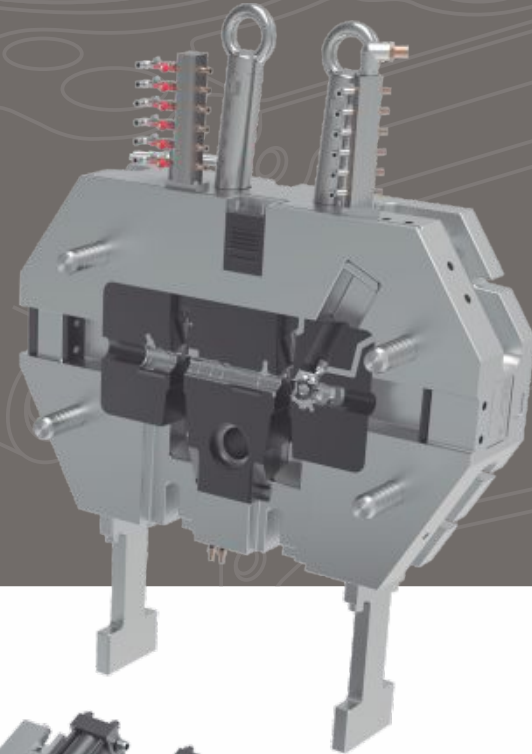
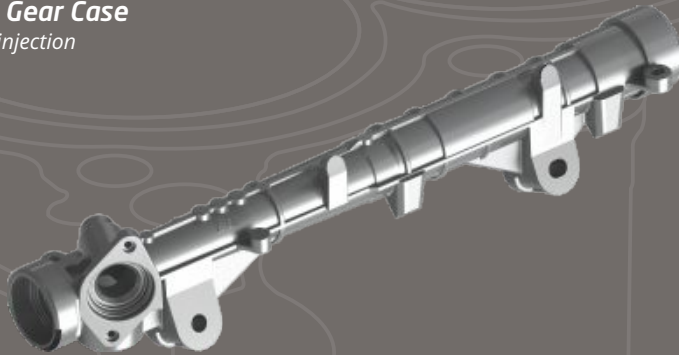


Carcaça de Direção

Injeção de Alumínio

Steering Gear Case

Aluminum injection



Molde Carcaça de Direção

Dimensão: 3266 x 1805 x 765mm

Peso: 6480kg

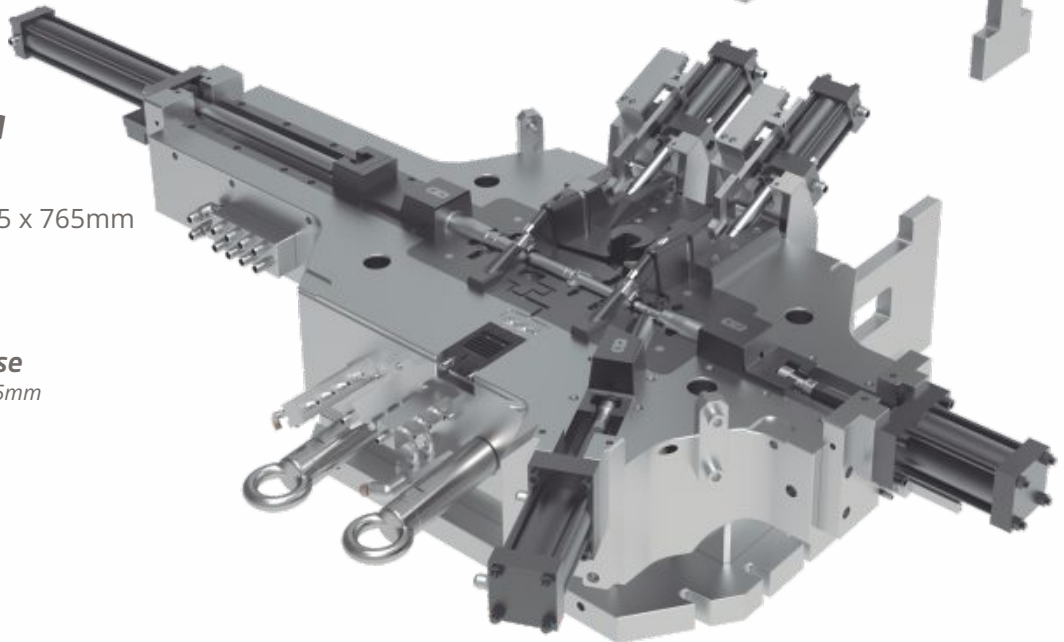
n° de Cavidades: 1

Mold Steering Gear Case

Dimension: 3266 x 1805 x 765mm

Weight: 6480kg

n° Cavities: 1

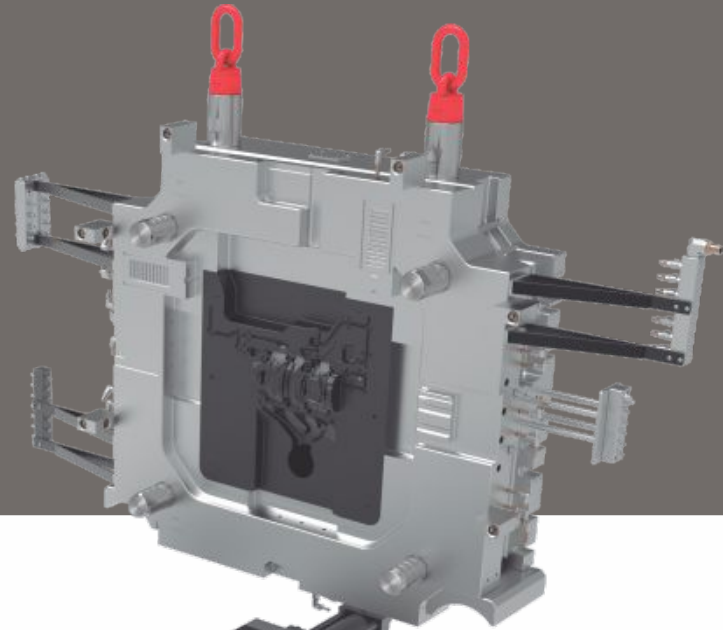
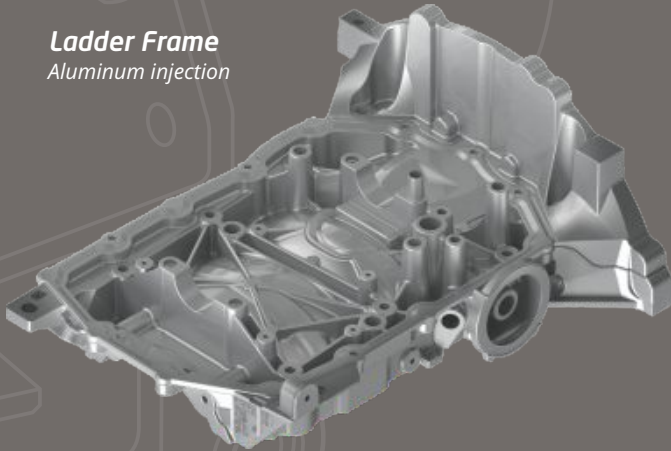


Ladder Frame

Injeção de Alumínio

Ladder Frame

Aluminum injection



Molde Ladder Frame

Dimensão: 1824 x 3497 x 1184mm

Peso: 20700kg

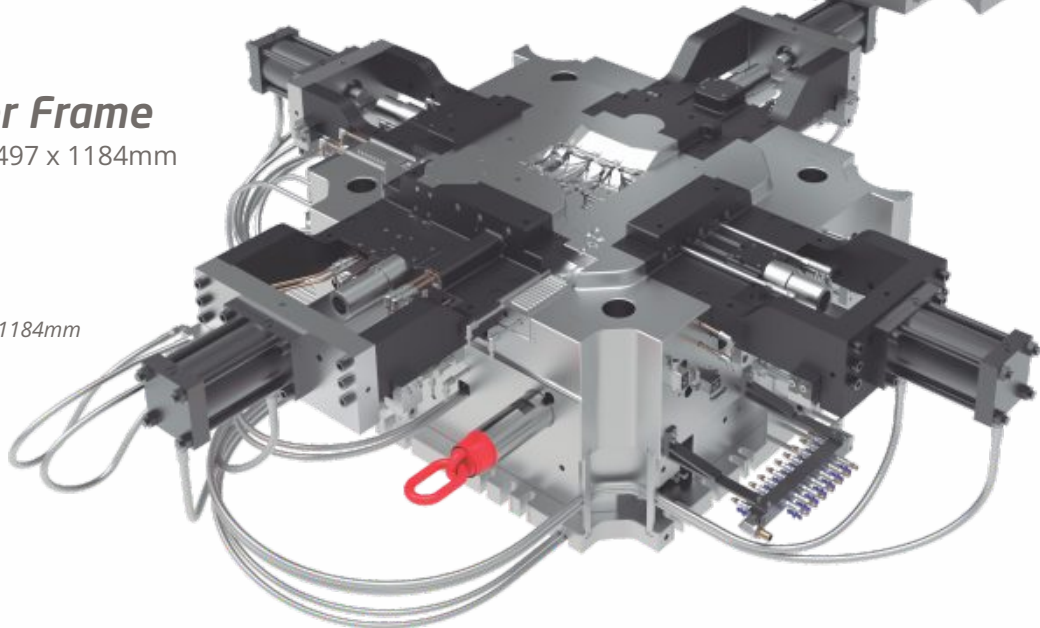
nº de Cavidades: 1

Mold Ladder Frame

Dimension: 1824 x 3497 x 1184mm

Weight: 20700kg

nº Cavities: 1

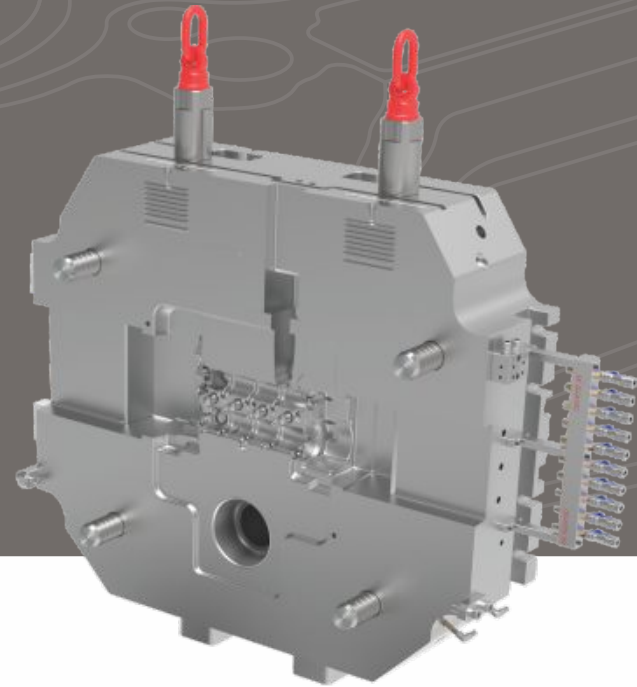


Tampa do Cabeçote 4 Cil.

Injeção de Alumínio

Cylinder Heads

Aluminum injection



Molde Tampa do Cabeçote 4 Cil.

Dimensão: 1930 x 1581 x 1160mm

Peso: 12200kg

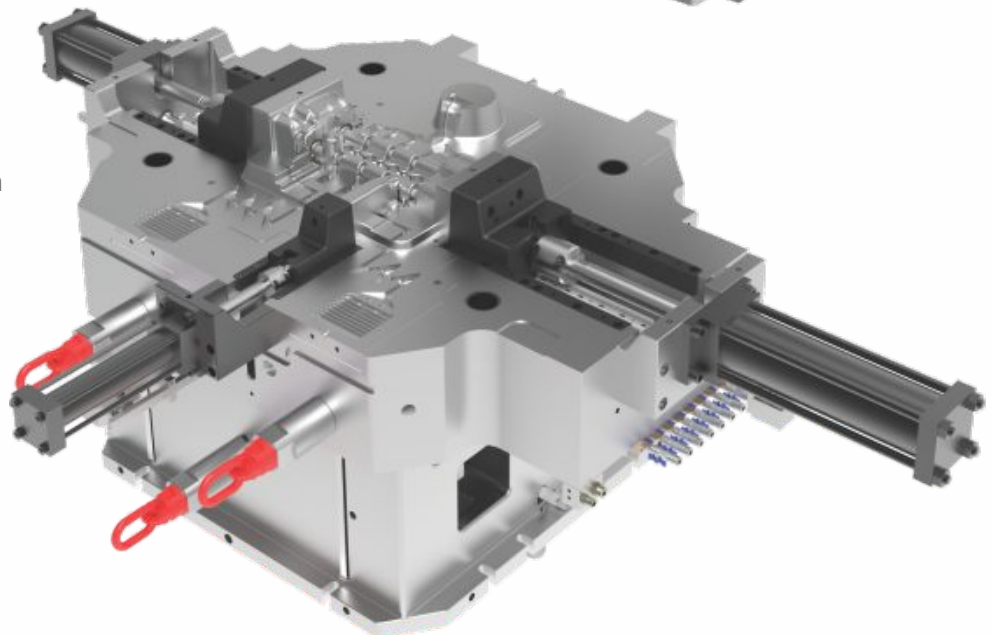
n° de Cavidades: 1

Mold Cylinder Heads

Dimension: 1930 x 1581 x 1160mm

Weight: 12200kg

n° Cavities: 1

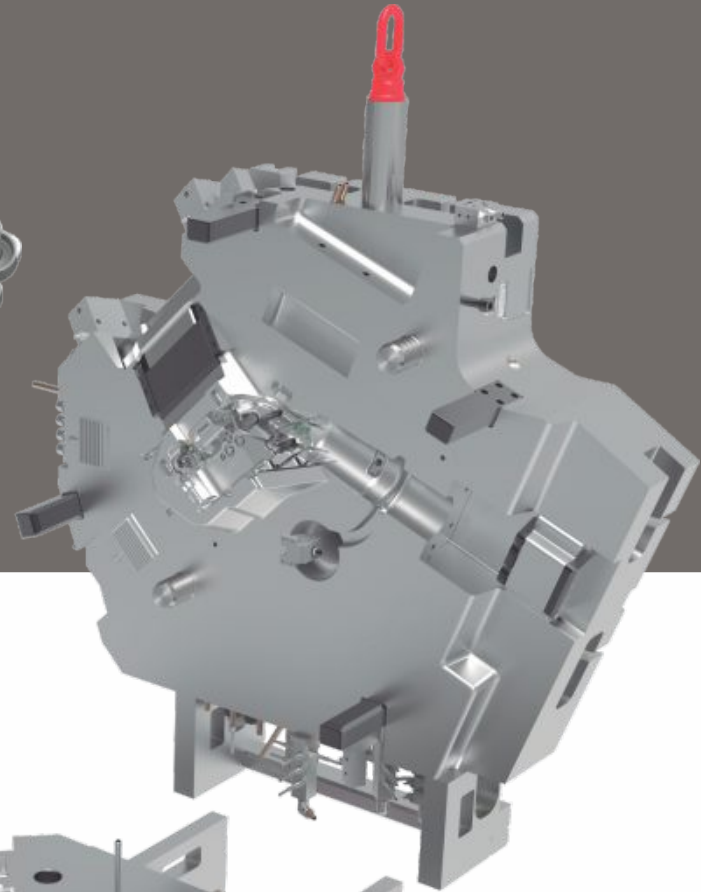
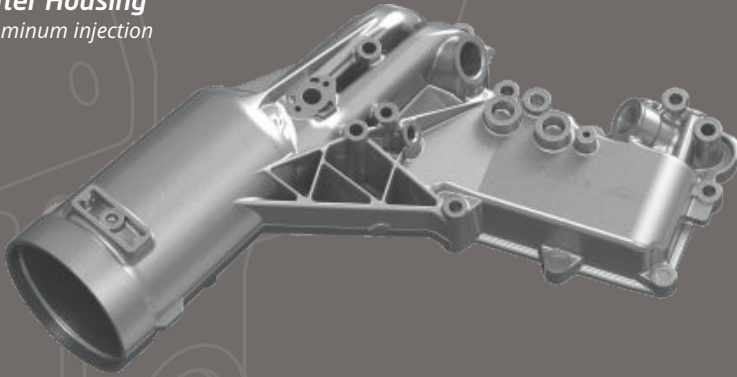


Carcaça de Filtro

Injeção de Alumínio

Filter Housing

Aluminum injection



Molde Carcaça de Filtro

Dimensão: 1844 x 1490 x 935mm

Peso: 12901kg

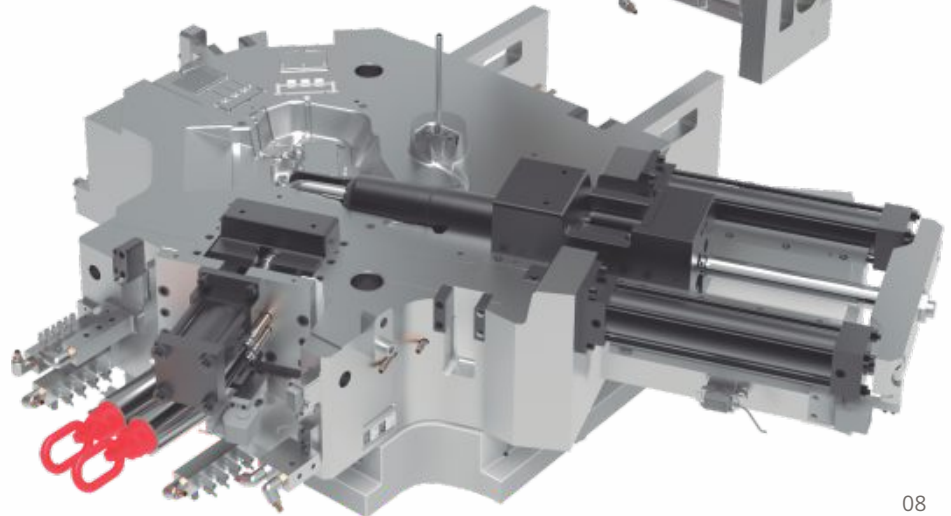
nº de Cavidades: 1

Mold Filter Housing

Dimension: 1844 x 1490 x 935mm

Weight: 12901kg

nº Cavities: 1





*Centro de Usinagem - DMG 5 Eixos
Machining Center - 5 Axis DMG*



*Pressetter de Ferramenta - EZSET 400
Tool setup made easy*





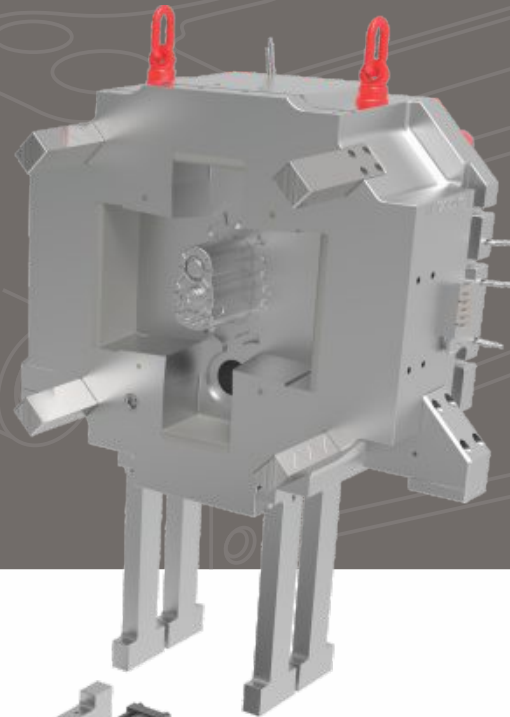
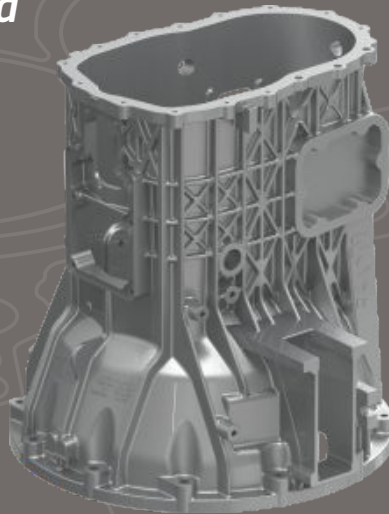
*Prensa Hidráulica para
fechamento de moldes*
Hydraulic Press for Closing of Molds

Carcaça Dianteira

Injeção de Alumínio

Front Housing

Aluminum injection



Molde Carcaça Dianteira

Dimensão: 3725 x 3449 x 1627mm

Peso: 31200kg

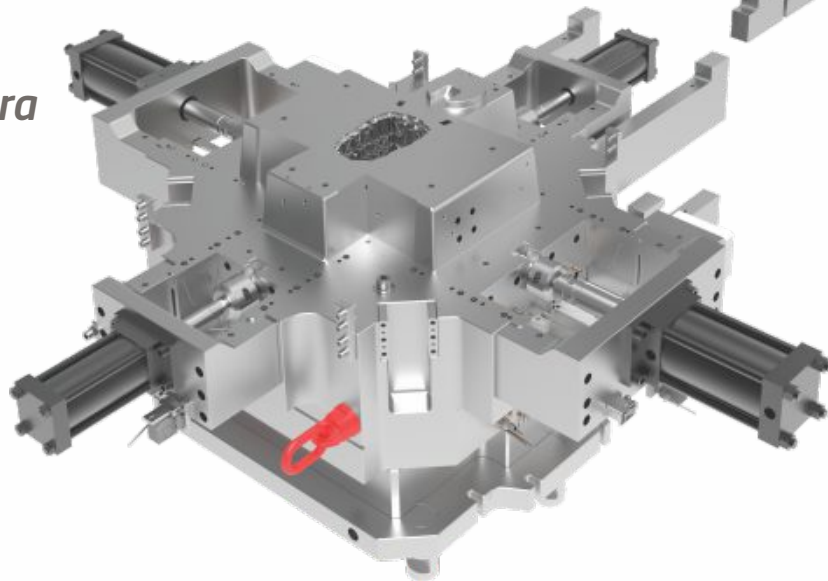
n° de Cavidades: 1

Mold Front Housing

Dimension: 3725 x 3449 x 1627mm

Weight: 31200kg

n° Cavities: 1

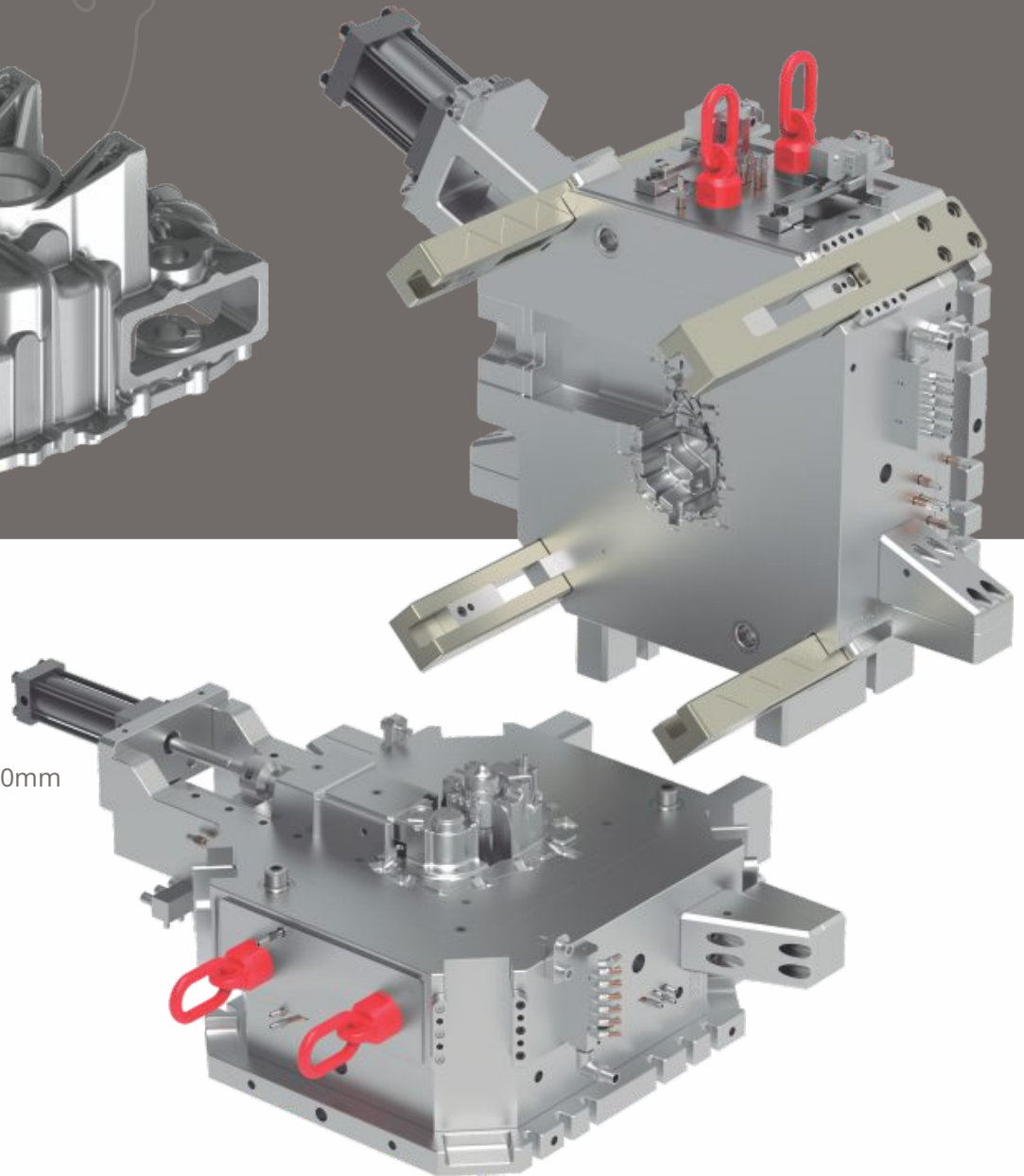
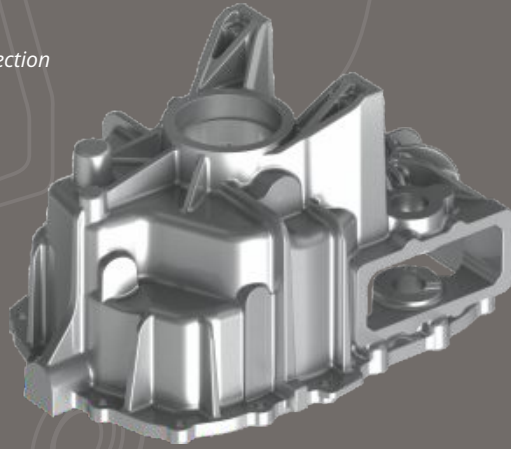


Carter

Injeção de Alumínio

Pan

Aluminum injection



Molde Carter

Dimensão: 1253 x 1175 x 1010mm

Peso: 7600kg

nº de Cavidades: 1

Mold Pan

Dimension: 1253 x 1175 x 1010mm

Weight: 7600kg

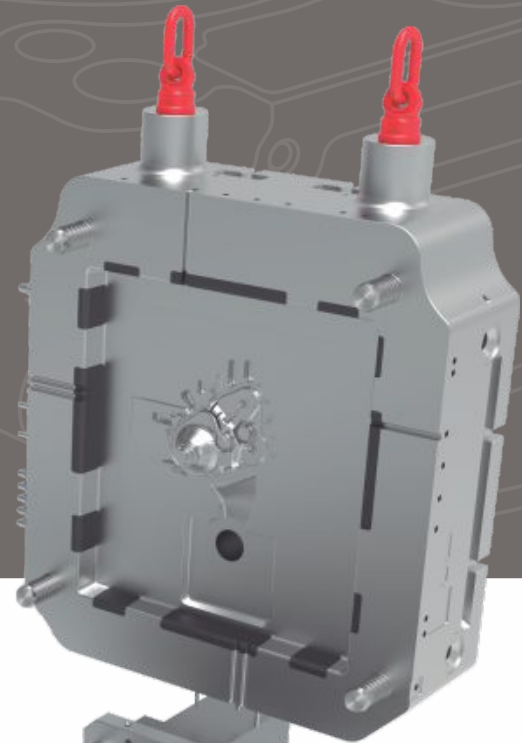
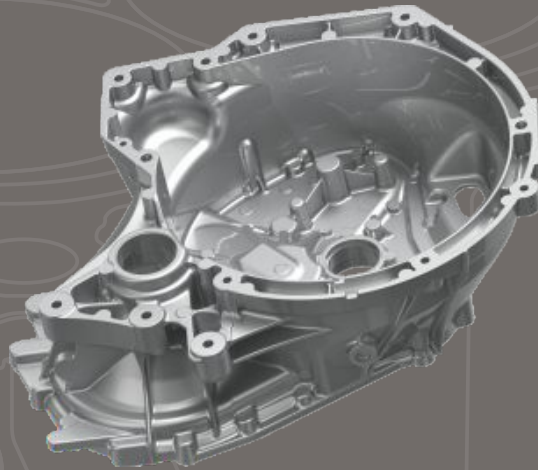
nº Cavities: 1

Carter Embreagem

Injeção de Alumínio

Cluth Case

Aluminum injection



Molde Carter Embreagem

Dimensão: 3450 x 3375 x 1058mm

Peso: 18700kg

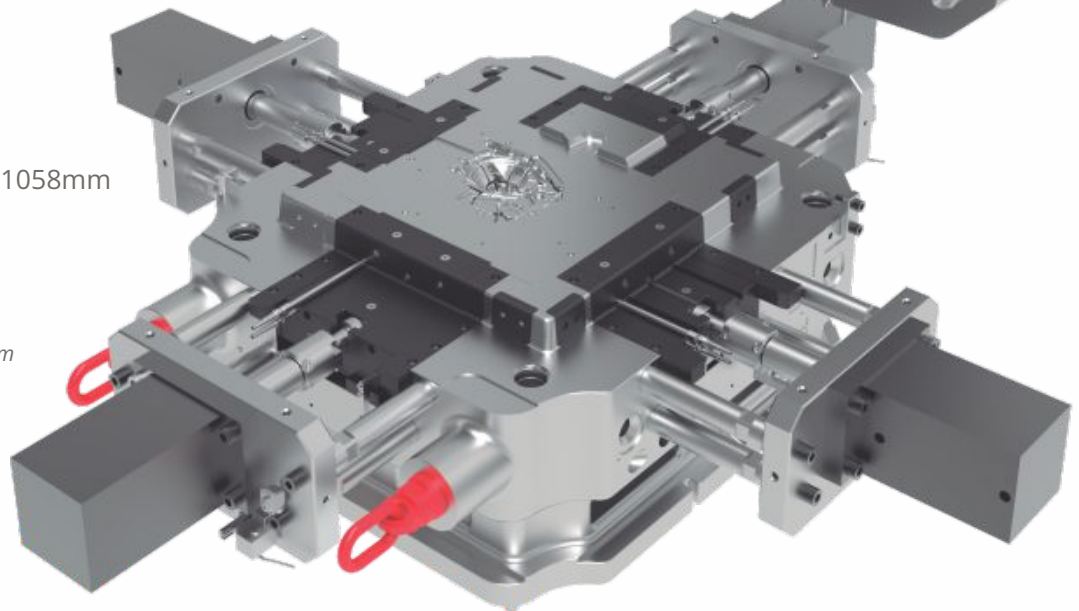
n° de Cavidades: 1

Mold Cluth Case

Dimension: 3450 x 3375 x 1058mm

Weight: 18700kg

n° Cavities: 1

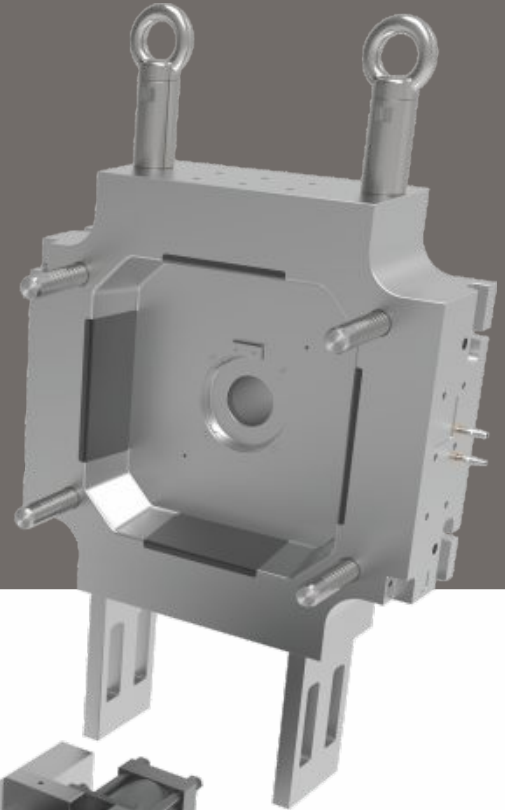
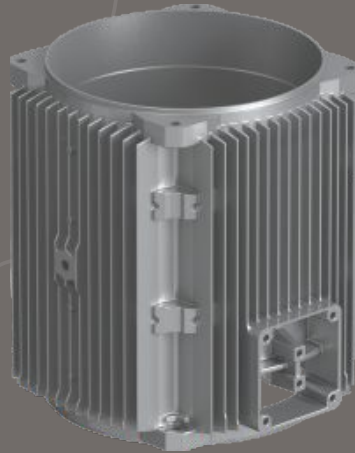


Carcaça do Motor

Injeção de Alumínio

Motor Housing

Aluminum injection



Molde Carcaça do Motor

Dimensão: 1260 x 1260 x 1000mm

Peso: 11853kg

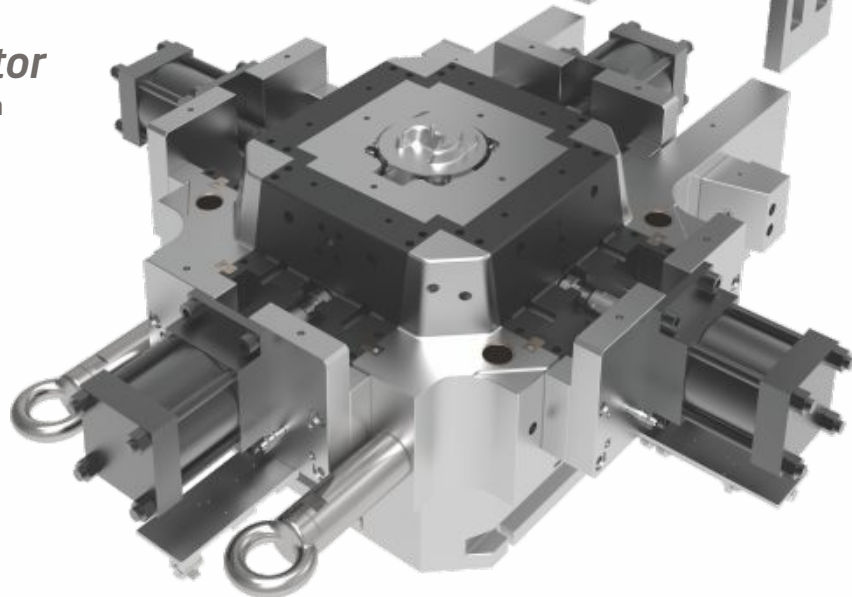
n° de Cavidades: 1

Mold Motor Housing

Dimension: 1260 x 1260 x 1000mm

Weight: 11853kg

n° Cavities: 1





Mitutoyo
COORDINATE
MEASURING MACHINE

Crysta
-Plus M

DUROTWIN

Ferramentas de excelência

O setor de metrologia realiza controle dimensional dos componentes e amostras injetadas dos moldes fabricados pela JN Ferramentaria.

Tools of excellence

The metrology sector performs dimensional control of the components and injected samples of the dies manufactured by JN Ferramentaria.



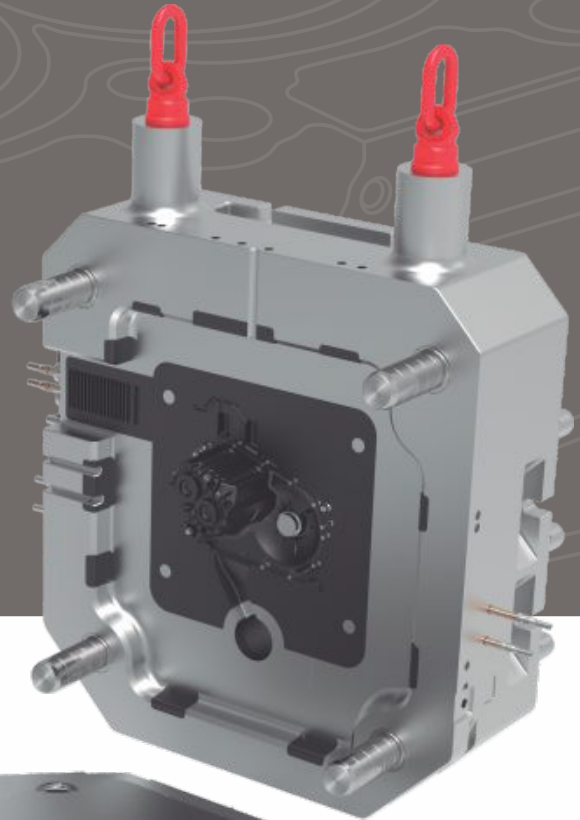
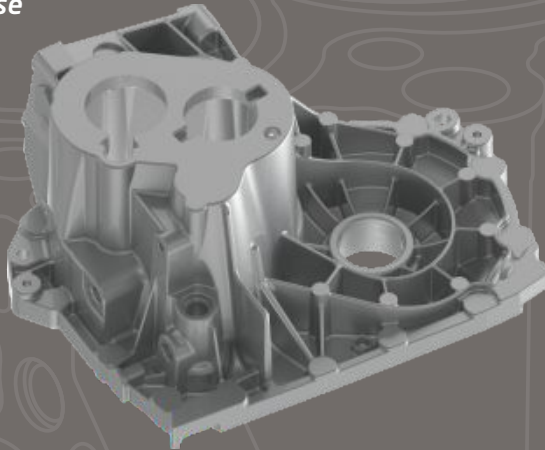
*Scanner 3D
Steinbichler/Zeiss*

Caixa de Transmissão

Injeção de Alumínio

Transmission Case

Aluminum injection



Molde Caixa de Transmissão

Dimensão: 1932 x 1624 x 930mm

Peso: 9100kg

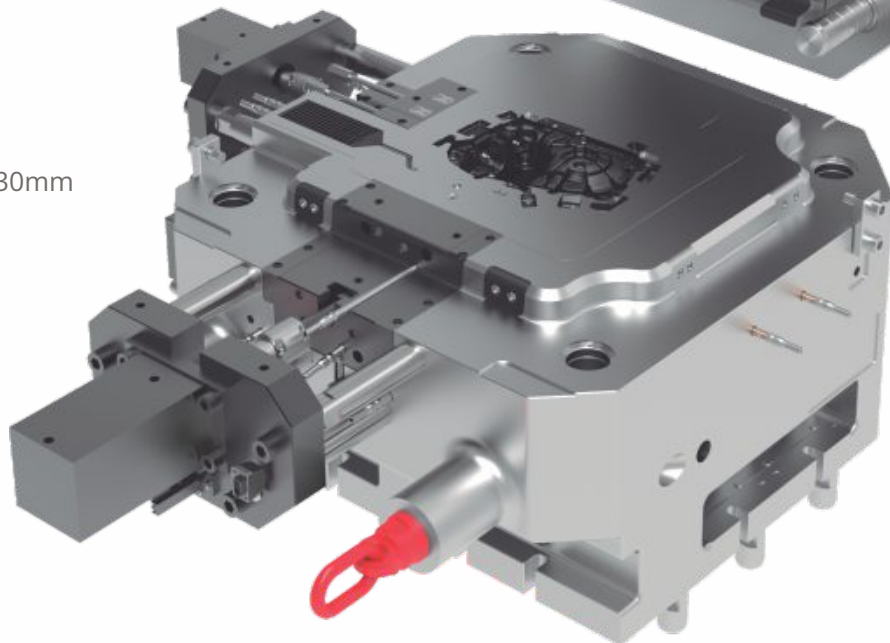
n° de Cavidades: 1

Mold Transmission Case

Dimension: 1932 x 1624 x 930mm

Weight: 9100kg

n° Cavities: 1

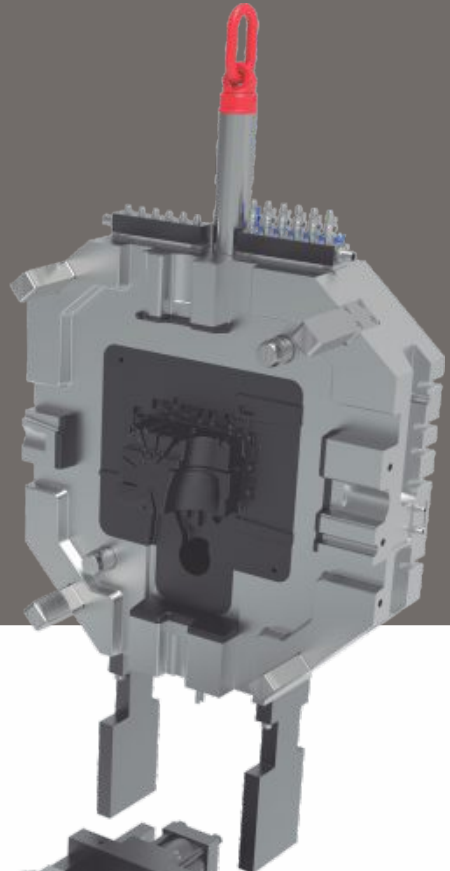
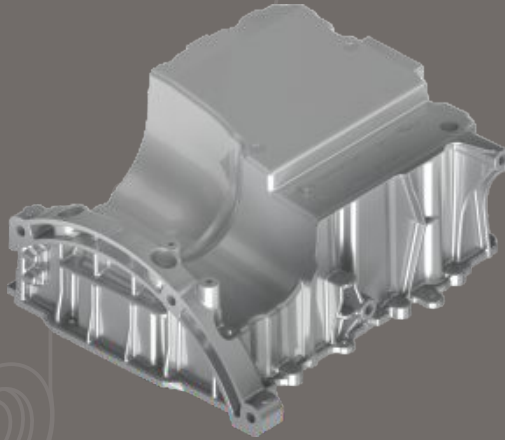


Carter Óleo

Injeção de Alumínio

Oil Pan

Aluminum injection



Molde Carter Óleo

Dimensão: 2188 x 2244 x 893mm

Peso: 7522kg

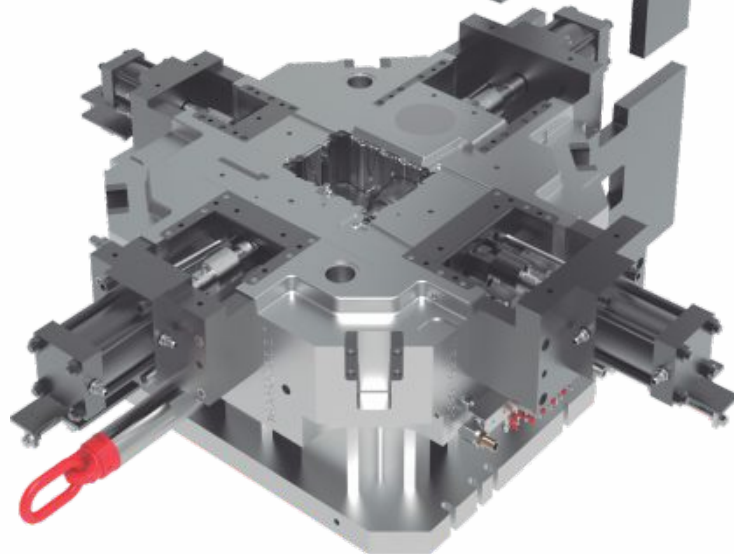
n° de Cavidades: 1

Mold Oil Pan

Dimension: 2188 x 2244 x 893mm

Weight: 7522kg

n° Cavities: 1

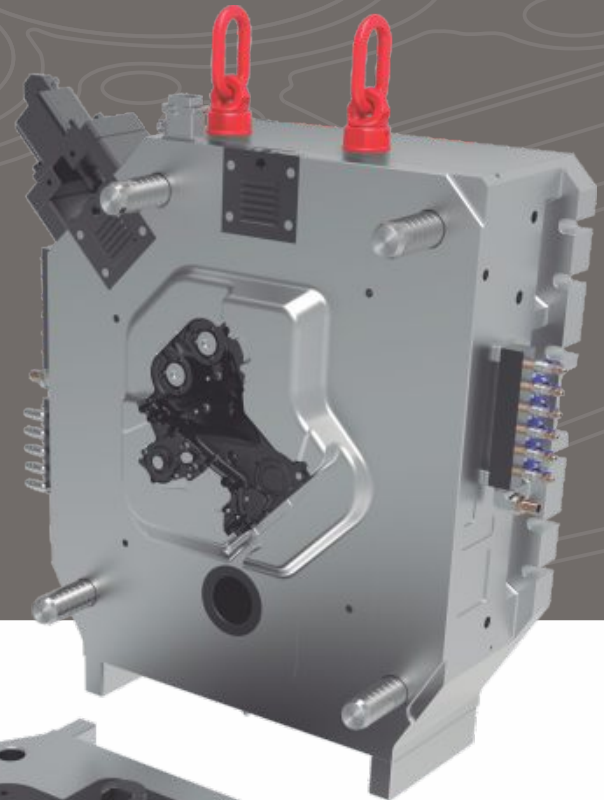
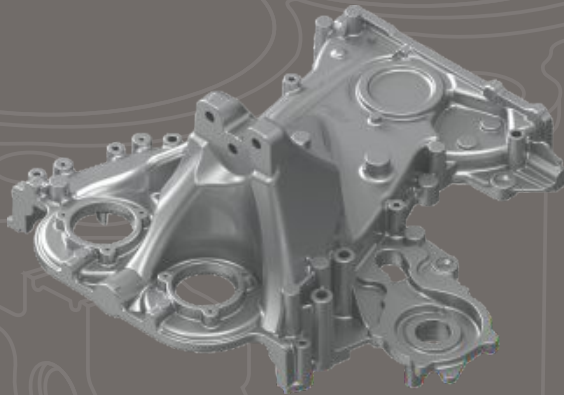


Tampa Frontal

Injeção de Alumínio

Front Cover

Aluminum injection



Molde Tampa Frontal

Dimensão: 1470 x 1498 x 990mm

Peso: 9537kg

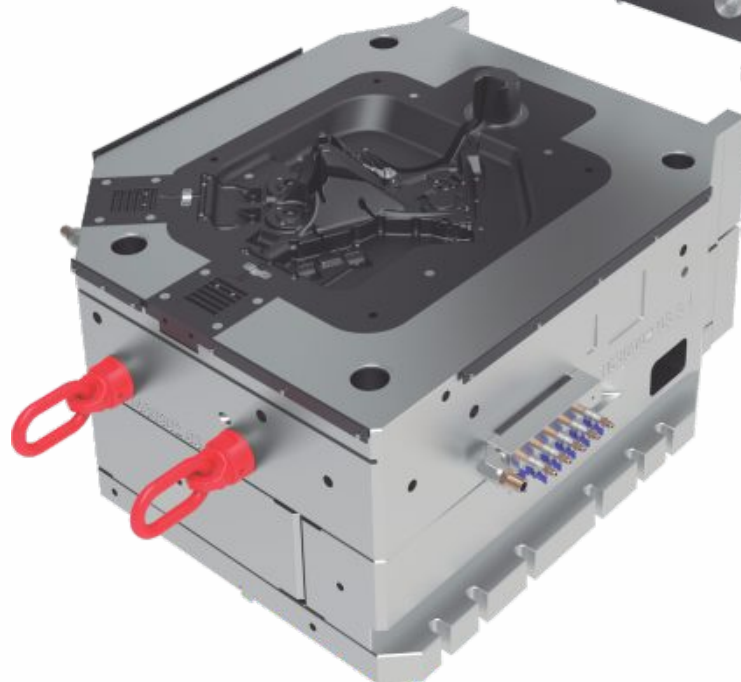
n° de Cavidades: 1

Mold Front Cover

Dimension: 1470 x 1498 x 990mm

Weight: 9537kg

n° Cavities: 1

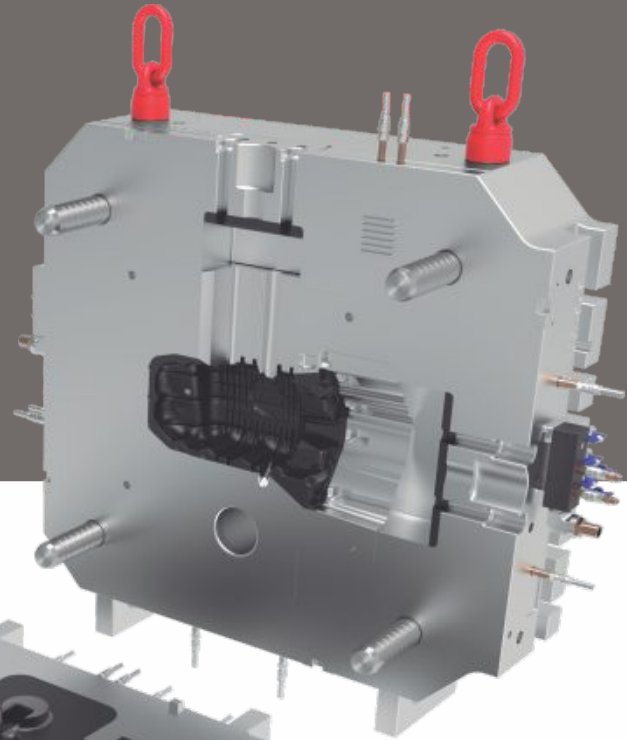


Carter Óleo

Injeção de Alumínio

Oil Pan

Aluminum injection



Molde Carter Óleo

Dimensão: 1922 x 1545 x 830mm

Peso: 6670kg

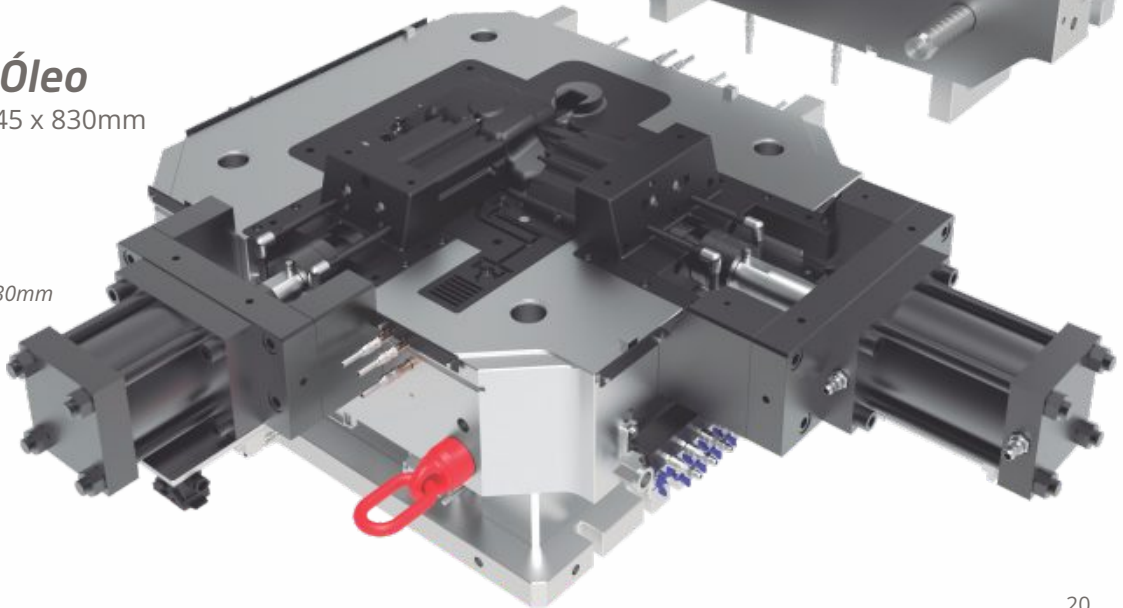
nº de Cavidades: 1

Mold Oil Pan

Dimension: 1922 x 1545 x 830mm

Weight: 6670kg

nº Cavities: 1

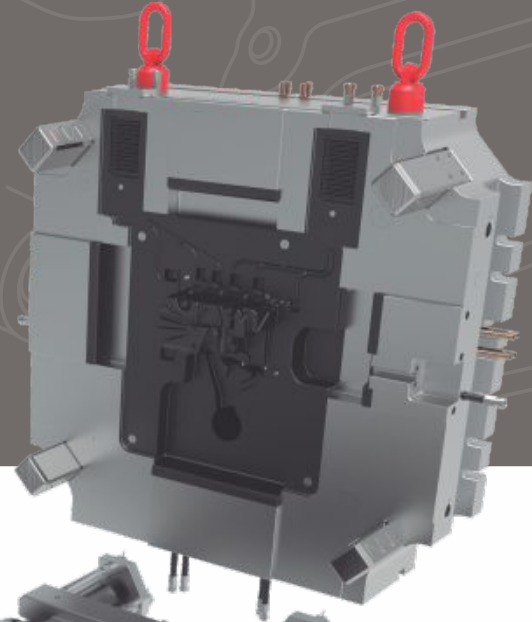
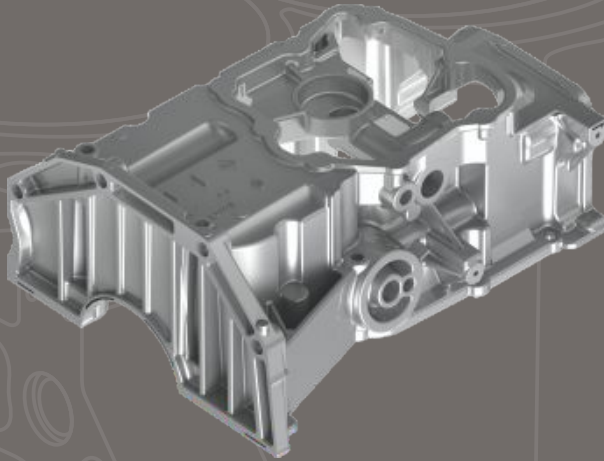


Carter Óleo

Injeção de Alumínio

Oil Pan

Aluminum injection



Molde Carter Óleo

Dimensão: 2926 x 2896 x 1180mm

Peso: 21093kg

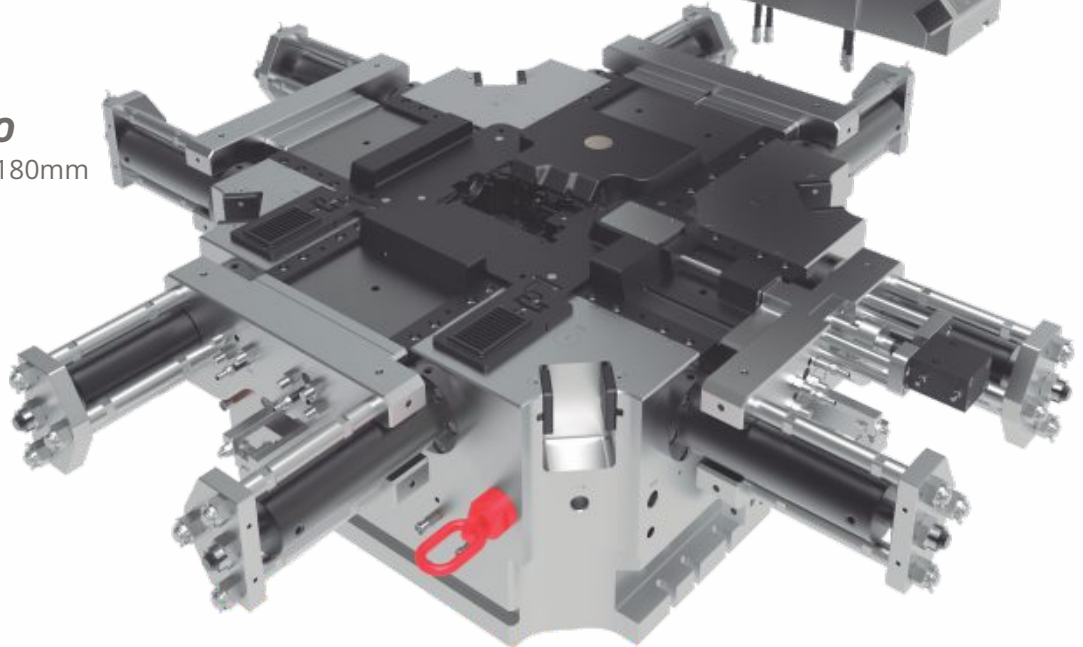
nº de Cavidades: 1

Mold Oil Pan

Dimension: 2926 x 2896 x 1180mm

Weight: 21093kg

nº Cavities: 1

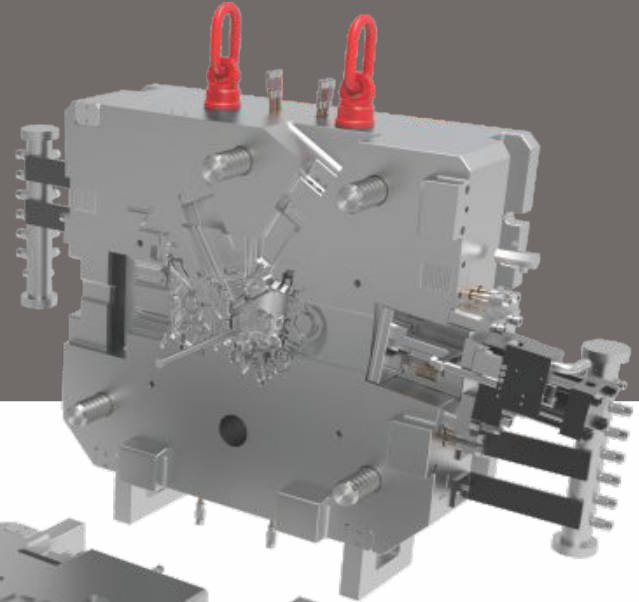
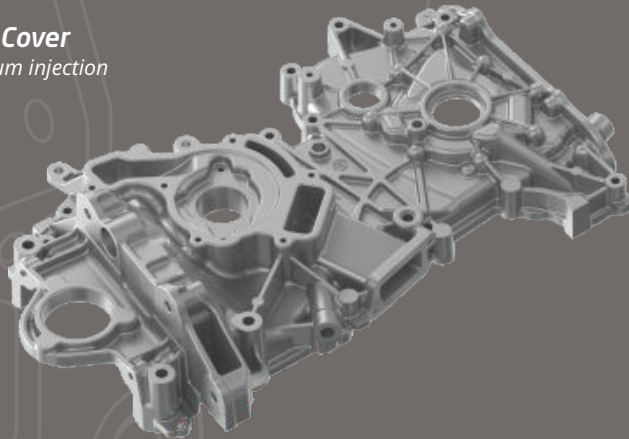


Tampa Frontal

Injeção de Alumínio

Front Cover

Aluminum injection



Molde Tampa Frontal

Dimensão: 2003 x 1660 x 1080mm

Peso: 9780kg

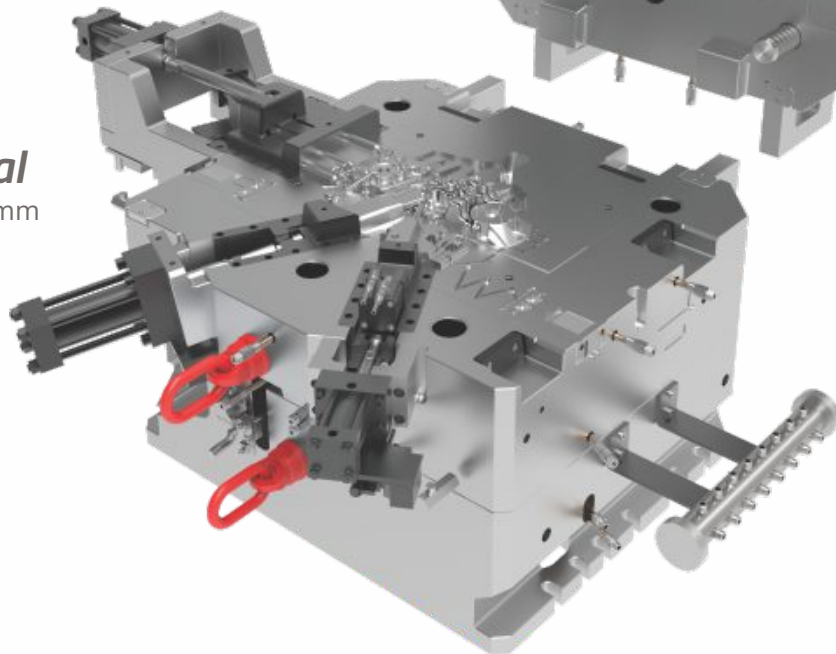
nº de Cavidades: 1

Mold Front Cover

Dimension: 2003 x 1660 x 1080mm

Weight: 9780kg

nº Cavities: 1



Experiência com os melhores
Experienced in serving the best

Temos **satisfação** de dar suporte na produção de grandes nomes do mercado e atender as expectativas e metas de **qualidade** de cada uma.

We are pleased to be a helping hand in the production lines of large brands in the market and fulfill the expectations and quality goals of every one of them.

STIHL



WABCO

HONDA

BOSCH

HONDA

ZF Sistemas de Dirección

AISIN
Geared up for the future



MAHLE

RENAULT

nemak

DENSO

Teksid

JTEKT

Autometal



Rua Jacutinga, 206, Iriirú - CEP 89227-365
Joinville - Santa Catarina, Brasil.
Fone: +55 (47) 3431-8900
comercial.diecasting@fjn.com.br
vendas@fjn.com.br

www.fjn.com.br